



R&M
LIGHTING

AN INDEPENDENT
CONNECTIONS PROVIDER

www.randrnlighting.co.uk

AN ALTERNATIVE APPROACH
TO MAINS CONNECTIONS

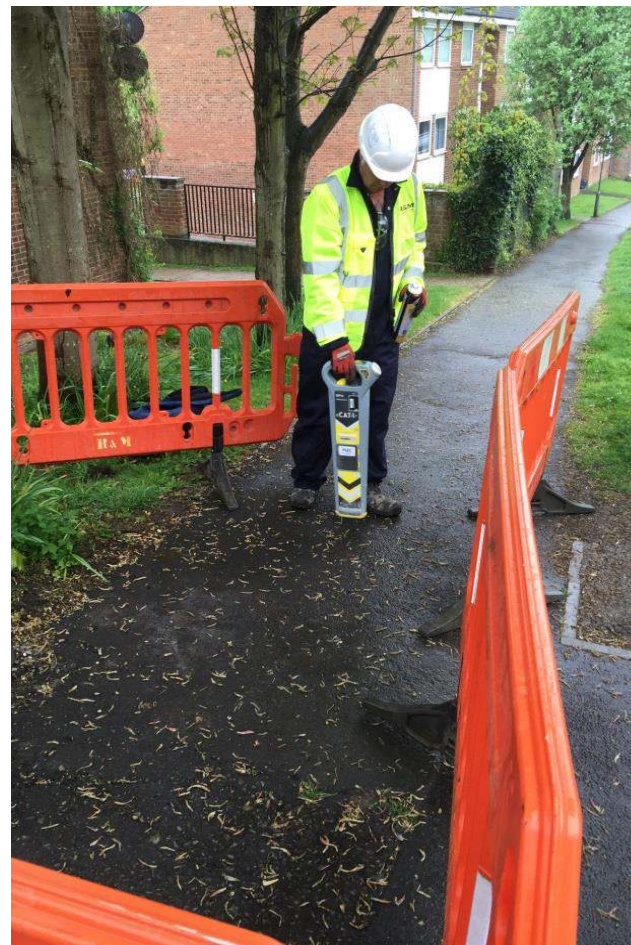


THE ONE STOP ICP FOR ALL YOUR LIGHTING NEEDS

Since the end of 2015, R&M Lighting has been able to offer mains connections, transfers and disconnections to compliment the raft of other related services we provide. We have invested heavily in this area and worked hard to meet the stringent regulations set out by NERS, to the extent that our company is now a registered Independent Connections Provider.

So what does this really mean?

This means you will no longer have to wait for a Distribution Network Operator to visit a site simply to let you move a column or carry out a 'take down'. This means no more paying up front and then waiting months for the DNO to attend sites. You can simply call R&M Lighting and we can see any project through at a fraction of the cost.



In addition to promoting our new services, this brochure will explain the process for our new and existing clients.

With this information in hand, we hope you will feel confident in making informed decisions regarding your connections and, in turn, call upon us to do the hard work for you.

HOW OUR ICP STATUS HELPS YOU

As any busy contractor will know, long lead ins and the co-ordination of multiple services and suppliers can be a major challenge on even the smallest of projects, let alone the largest. The key benefit of our ICP status is that we can manage the process from start to finish, reducing your time, costs and the number of contractors on site which in turn has a positive impact on safety. Sound too good to be true? Well with R&M it isn't, please contact us on 01628 672445 or read on for more information.



THE PROCESS

Once you have hired R&M Lighting to carry out your connection works based upon your expected requirements – standard pricing for which is available upon request – we will carry out a site survey to determine exactly what is required and provide a fixed quote for the works based upon our findings.

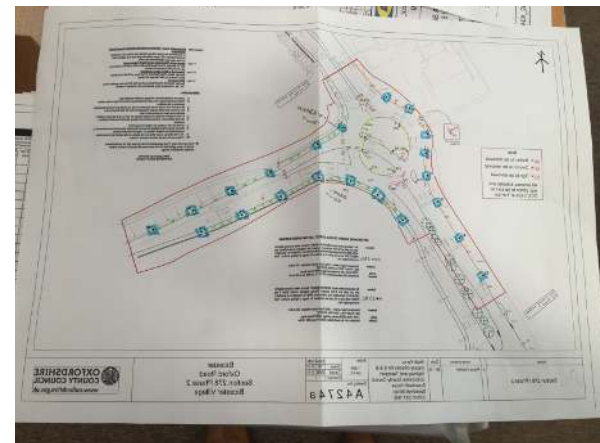
Read on for an outline of the process involved with using our services...

STEP 1

R&M Lighting visits the site and carries out a survey of the existing services to determine your new service requirements

This involves opening column doors to identify:

- The supply type (private or DNO)
- The type and the number of cables



STEP 2

R&M Lighting populates scheme drawings with the information gathered from our site visit

This involves adding any missing location information to the drawings such as column and sign numbers.

At this point we would also record any secondary supply locations.

STEP 3

R&M Lighting collates the gathered information and formally applies to the DNO for permission to carry out the intended works

At this point we have to complete the individual DNO's paperwork, since each authority has its own systems that have to be strictly followed.

In essence, we have to submit an application to work with each piece of equipment before we can carry out any work on site.



STEP 4

Once approval has been granted, R&M Lighting schedules the works in accordance with the DNO's approvals

Whilst we are managing to increasingly streamline processes and strengthen relations with the relevant authorities, typically in London there are factors that can and often do prevent the works being approved upon the first application.

As a qualified contractor, we can take away the hassles of dealing with the DNO and make further applications to get around this such as fuse and linking.

STEP 5

R&M Lighting liaises with the relevant utility companies to obtain all relevant stats drawings



STEP 6

R&M Lighting attends the site and carries out all required excavation works in line with the DNO's individual requirements

As with the paperwork, each DNO's excavation requirements differ and we would work to the individual authority's specification in order to ensure that the completed installation is accepted by the DNO.

STEP 7

R&M Lighting attends the site and carries out all the project specific jointing and column requirements

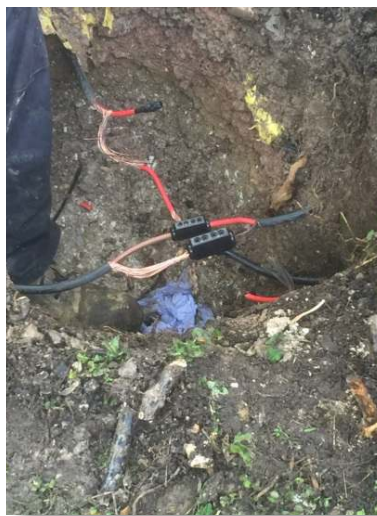
Wherever a disconnection, a removal, a new install or a new service is required, we would carry out the electrical work on the same visit, thereby ensuring a smooth operation and minimal onsite disruption.



STEP 8

R&M Lighting back fills and reinstates in accordance to the local specifications.

As with the paperwork, each DNO's requirements differ and we would work to the individual authority's specification so as to ensure that the DNO will accept the completed installation.



In summary, the key benefits of using this one stop service are minimised onsite disruption and time wastage; added flexibility; quicker availability and reduced prices. Best of all, it negates the need to carry out a lengthy order process and pay for the works in advance, which no one likes!

So whatever your requirements, give R&M Lighting a call to find a better way to serve all your connection needs going forward.